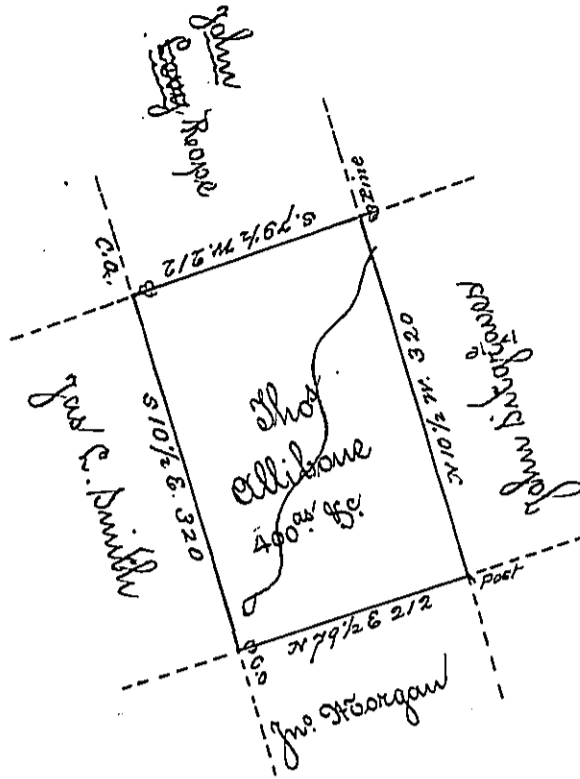


Hazle
Luzerne

(see Page 193)



A Draft of a tract of land called _____ situate on the waters of _____ creek
 in the County of Northampton or Northampton containing four _____ acres & allow^d Sur-
 veyed for Sho. Ollibone the 20th day of _____ virtue of a warrant dated the
 10th day of July 1793

To Daniel Bradhead Esq^r. }
 Surv^r: Genl. }

by Wm. G. 1833

IN TESTIMONY that the above is a copy of the original remaining on file in
 the Department of Internal Affairs of Pennsylvania, made
 conformably to an Act of Assembly approved the 16th day of
 February, 1833, I have hereunto set my Hand and caused
 the Seal of said Department to be affixed at Harrisburg,
 this _____ day of _____ 1902.

James Latta
 Secretary of Internal Affairs.